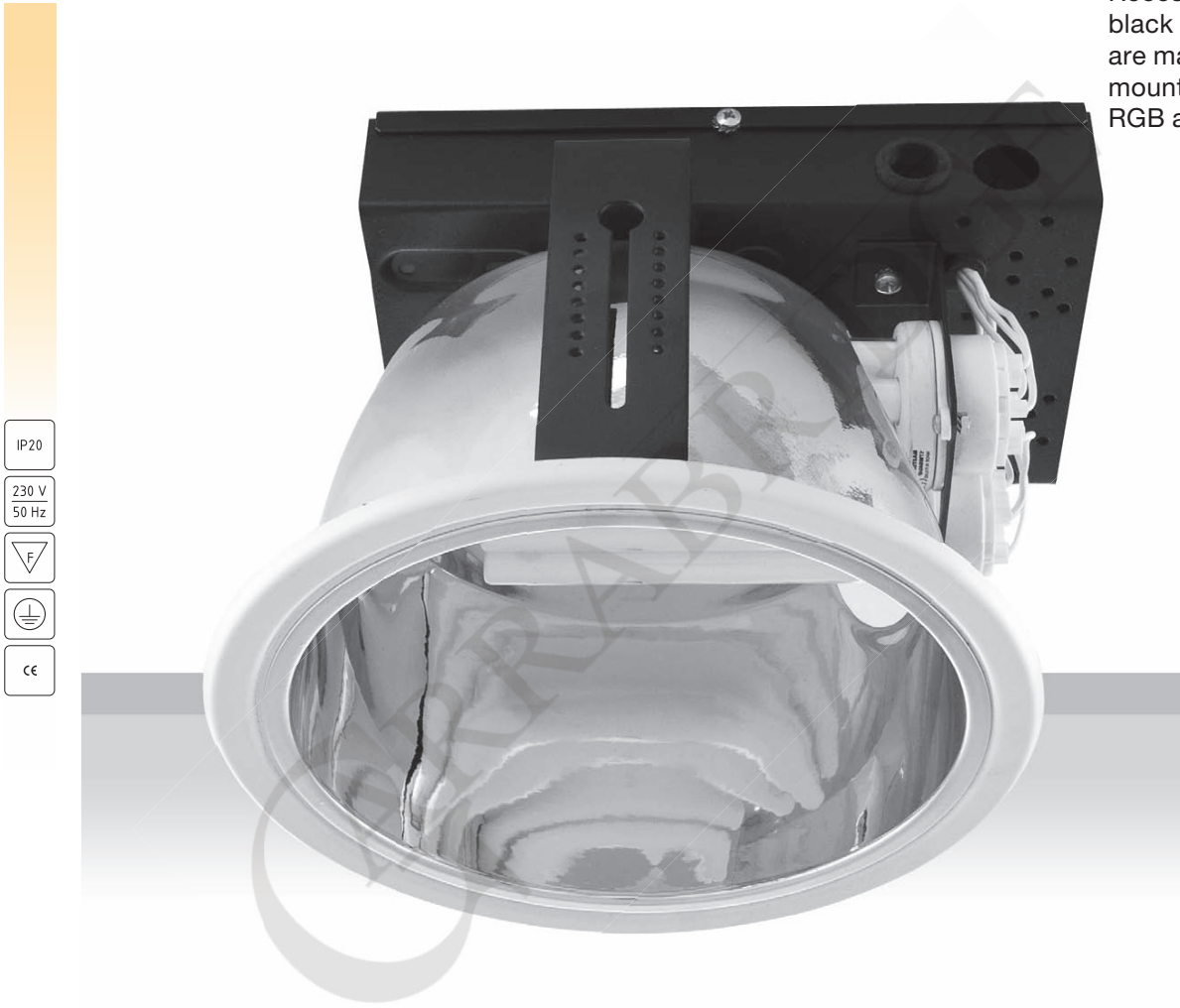


Recessed downlight for PLR ECO lamps. Body (standard zinc, painted black on request) and ring (standard white, other colours on request) are made of steel. Reflector made of aluminium. Gearbox can be mounted on the top or remote on wire (for remote gearbox please add RGB after index number).



- IP20
- 230 V
50 Hz
- F
- ⊕
- CE



Easy installation – without tools.



Diamond faceted reflector (F).



Mounting brackets.

Index no.	Lamp	Weight	Socket
0000-002731.114E	EVG, 1x14 W PL-R Eco	1,60 kg	GR14q
0000-002731.117E	EVG, 1x17 W PL-R Eco	1,60 kg	GR14q
0000-002731.214E	EVG, 2x14 W PL-R Eco	1,70 kg	GR14q
0000-002731.217E	EVG, 2x17 W PL-R Eco	1,70 kg	GR14q

