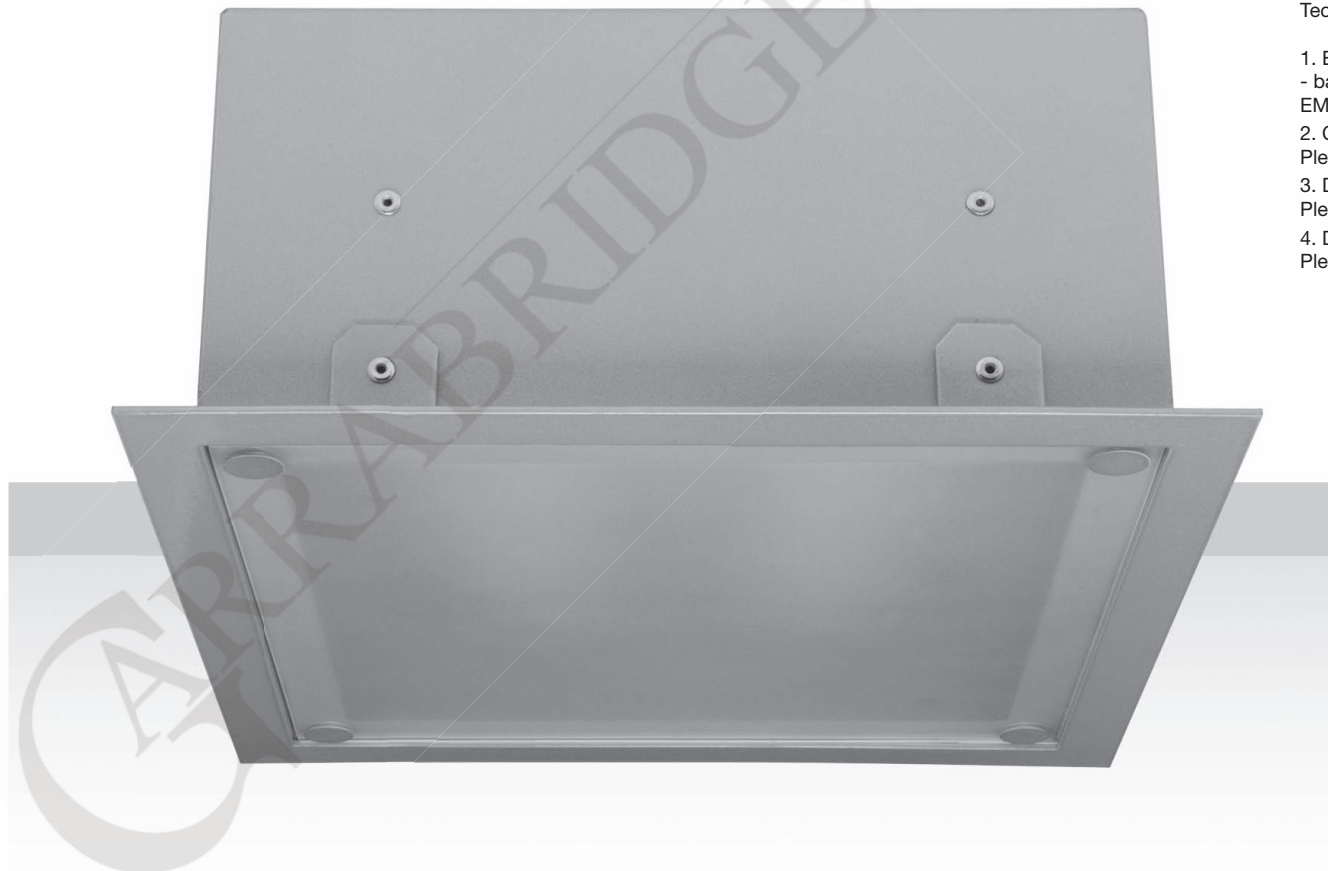


Recessed luminaire for compact fluorescent lamps with glass diffuser.
Body is made of steel and aluminium and is available in all RAL colours.

Technical extras upon request:

1. Emergency supply
- battery pack 1/2/3h (please add EM1, EM2 or EM3 after index number)
2. Compensation or passive power (capacitor).
Please add COMPENSATION after index number.
3. Dimmable ballast EVG DIM (1-10 V).
Please add EVG DIM after index number.
4. Digital dimmable ballast (DALI).
Please add DALI after index number.



IP44

230 V
50 Hz



CE

Index no.	Lamp	Weight	Socket
122.213V	VVG, 2x13W TC-D	3,90 kg	G24d - 1
122.213E	EVG, 2x13W TC-DEL	3,60 kg	G24q - 1
122.218V	VVG, 2x18W TC-D	3,90 kg	G24d - 2
122.218E	EVG, 2x18W TC-DEL	3,60 kg	G24q - 2
122.226V	VVG, 2x26W TC-D	3,90 kg	G24d - 3
122.226E	EVG, 2x26W TC-DEL	3,60 kg	G24q - 3


230 x 230

